

SDI | RIVA STAR

INSTRUCTIONS



DESENSITIZING CERVICAL TOOTH HYPERSENSITIVITY

1



Using a non-fluoride prophylaxis paste in a rubber cup, clean the tooth/teeth to be treated and abutting teeth.

2



Isolate area to be treated with cotton rolls or rubber dam, or protect the gingival tissue and lips around the affected tooth with petroleum jelly/cocoa butter.

3



Using silver brush, pierce foil on silver capsule.

4



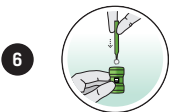
In circular motion, push foil to the edge of the opening.

SDI | RIVA STAR

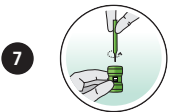


Carefully apply solution from silver capsule to treatment site only.

INSTRUCTIONS



Immediately using green brush, pierce foil on green capsule.



In circular motion, push foil to the edge of the opening.



Apply generous amount of solution from green capsule to treatment site. Keep applying until creamy white precipitate turns clear.



Blot dry. Remove all protective/isolation materials used in the mouth.



WARNING

Due to potential staining, it is recommended that esthetic zone teeth not be treated. The material could stain teeth if incorrectly used. Patient must be informed of this risk prior to its use.